

# Blood Controls

## Stability Testing CD4 Low and Normal Blood Controls

**RUO**

**REF**: CF04-L and CF04-N

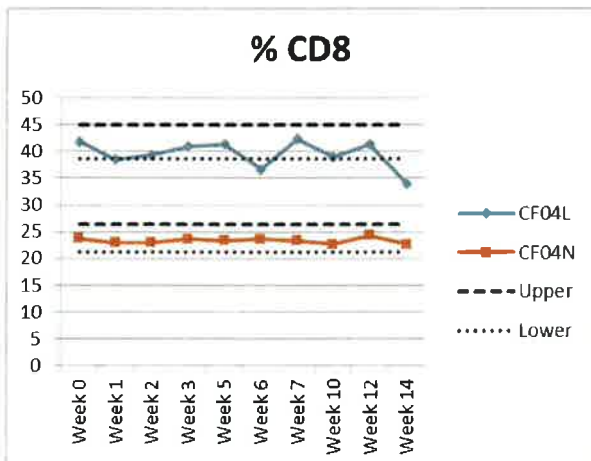


Figure 1: % of CD3+CD8+ cells for CF04-L and CF04-N over a 14 week testing period. Dotted lines indicate the upper and lower limits of the reference range provided to the customer. Each data point is an average of 3 tests.

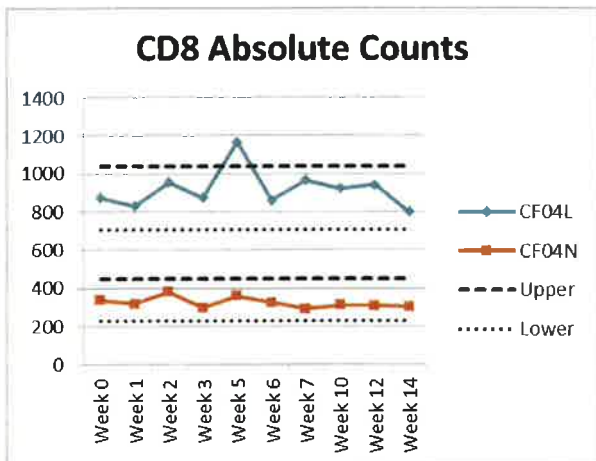


Figure 2: Absolute count of CD3+CD8+ cells for CF04-L and CF04-N over a 14 week testing period.

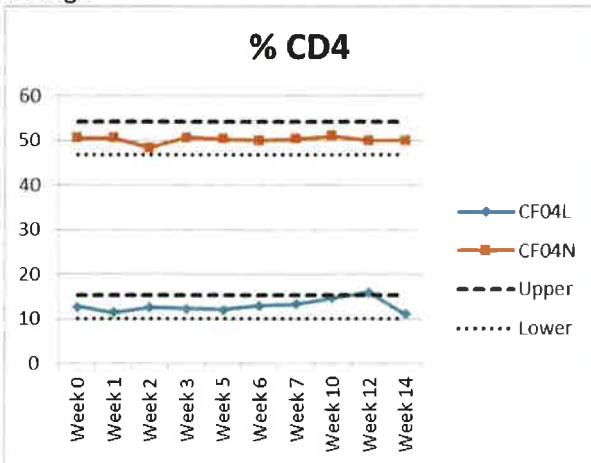


Figure 3: % of CD3+CD4+ cells for CF04-L and CF04-N over a 14 week testing period.

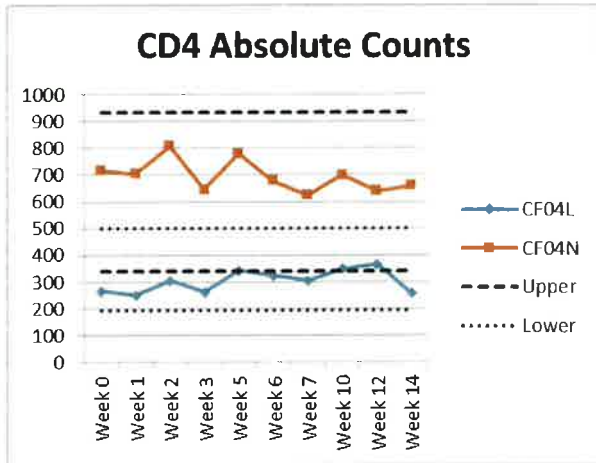


Figure 4: Absolute count of CD3+CD4+ cells for CF04-L and CF04-N over a 14 week testing period.

Results show that CD8+ and CD4+ T cells within the CD4 Low and CD4 Normal Blood Controls were statistically stable over the 14 week period. These results validate the 3 month closed vial shelf life given to the products: CF04-L and CF04-N.

Signature of Quality Control Manager

Daniel Harrison

