

# IVD

in Europe

## Preserve Cerebrospinal Fluid Leukocytes for 72 hrs to Increase Disease Detection with **TransFix**® CSF Sample Storage Tubes

The presence of white blood cells in the cerebrospinal fluid (CSF) is indicative of many central nervous system (CNS) diseases. The detection of leukocyte subsets in CSF is of vital importance for the accurate diagnosis and treatment of such diseases. However, low cellularity and cell viability of leukocytes causes challenges when analysing CSF with flow cytometry. This means that samples must be analysed urgently (within 1 h) which is not always possible.

**TransFix CSF Sample Storage Tubes** provides increased recovery of myeloid and lymphoid cells for up to 72 hours for analysis via flow cytometry, compared to untreated or RPMI-treated CSF samples.

Available as *in vitro* diagnostic devices in Europe.

### Benefits of CSF Sample Stabilisation

TransFix allows recovery of leukocytes subsets for up to 72 h days at 2-8°C, maintaining the immunophenotypic profile of CSF for better disease detection. This provides the following advantages:

#### Better for patients:

- More accurate diagnosis compared to untreated or RPMI-treated CSF samples
- Reduction in the need for repeat lumbar puncture – reduced trauma for patients

#### Reduced cost:

- Provides the opportunity to transport the samples for centralised diagnosis and multicentre clinical studies
- Greater efficiency in testing – allows for batching of samples prior to testing
- Further tests can be performed on the same sample after the initial analysis, without subject recall

#### Convenience:

- Easy to use - just transfer the CSF sample into the tube within 1 hour of lumbar puncture and mix by inversion
- Eliminates the need for weekend and evening work
- Reduces the impact of unexpected machine breakdown or staff shortages

### Widely endorsed by the clinical community

Recommended in the guidelines published in the British Journal of Haematology (1,2)

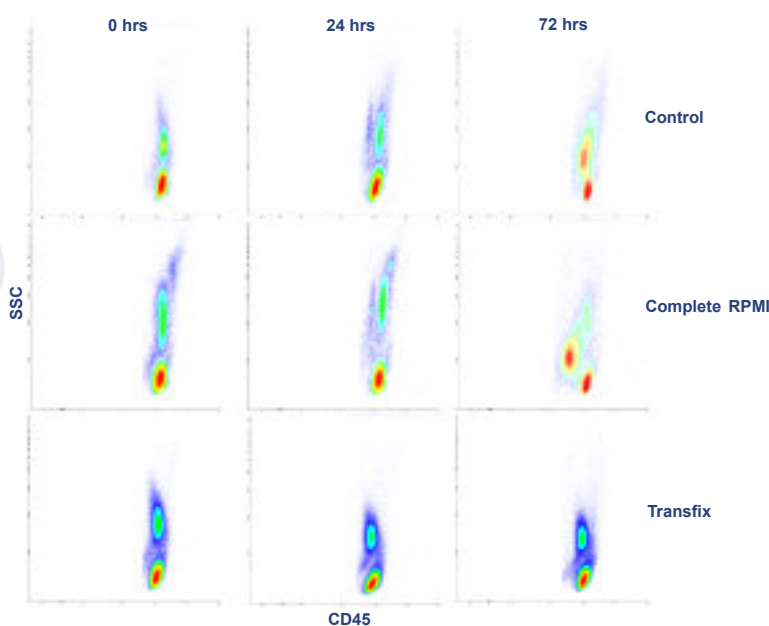
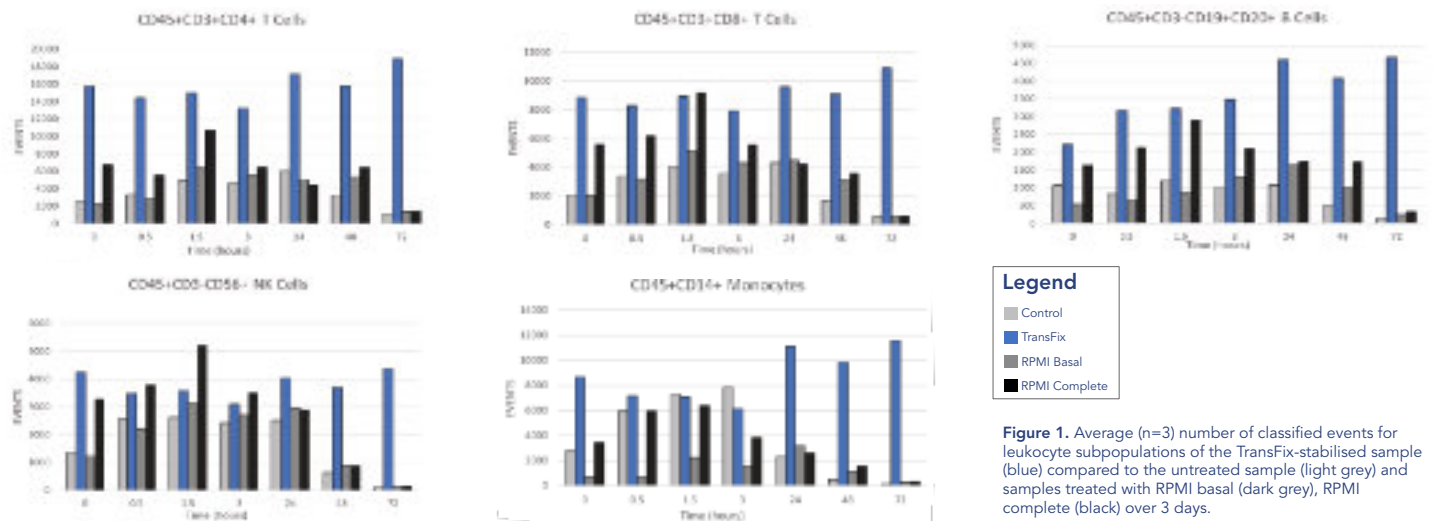
Endorsed by:

- The European Society for Clinical Cell Analysis the Italian Society for Clinical Cell Analysis (3)
- The Spanish Lymphoma Group (4)
- The Spanish Group for the Study of CNS Disease in Non-Hodgkins Lymphoma (5)
- The Brazilian Group of Flow Cytometry (6)
- International Working Group on Flow Cytometric Immunophenotyping of Cerebrospinal fluid (7)
- Colombian Consensus of FCM (8)

**ORDER NOW!** Visit: [www.cytomark.co.uk/distributors](http://www.cytomark.co.uk/distributors) to find your local distributor

# TransFix® CSF Sample Storage Tubes provide a superior stabilisation method for CSF up to 72 hrs compared to other methods

Mock CSF was stabilised with TransFix, basal RPMI and complete RPMI and compared to untreated mock CSF (control). **Figure 1** shows the recovery of lymphocyte subsets and monocytes at each time point. The event numbers for each cell subpopulation in the TransFix-treated sample remained relatively consistent for at least 72 hours whereas the event numbers in all 3 other samples were low, particularly within the first hour. Cell events also decreased sharply in non-TransFix treated samples after 24 hours.



**Figure 2.** Side scatter vs CD45+ dot plots for the untreated (control), RPMI Complete and TransFix-treated samples. Basal RPMI is not shown as it's comparable to the control.

The dot plots in **Figure 2** show side scatter vs CD45+ for the untreated control, complete RPMI and TransFix-treated samples at 0, 24 and 72 hours. The plots show that the density of events decreased with time in the control and RPMI-treated samples. The density of the populations remained consistent for the TransFix treated sample and there was good separation of monocytes and lymphocyte populations.

#### References

- Johansson U, Bloxham D, Couzens S, Jesson J, Morilla R, Erber W, and Macey M. Guidelines on the use of multicolour flow cytometry in the diagnosis of haematological neoplasms. *British Journal of Haematology*. 2014;165:455-488.
- Baraniskin A, Deckert M, Schulte-Altedorneburg G, Schlegel U, Schroers R. Current strategies in the diagnosis of diffuse large B-cell lymphoma of the central nervous system. *Br J Haematol*. 2012; 156(4):421-32.
- Del Principe MI, Gatti A, Johansson U, Buccisano F, Brando B. ESCCA/ISCCA protocol for the analysis of cerebrospinal fluid by multiparametric flow-cytometry in hematological malignancies. *Cytometry*. 2020; 1-13.
- Peñalver FJ, Sancho JM, de la Fuente A, Olave MT, Martín A, Panizo C, Pérez E, Salar A, Orfao A. Guidelines for diagnosis, prevention and management of central nervous system involvement in diffuse large B-cell lymphoma patients by the Spanish Lymphoma Group (GELTAMO). *Haematologica* 2017;102(2):235-245;
- Quijano S, López A, Manuel Sancho J, Panizo C, Debén G, Castilla C, Antonio García-Vela J, Salar A, Alonso-Vence N, González-Barca E, Peñalver FJ, Plaza-Villa J, Morado M, García-Marco J, Arias J, Briones J, Ferrer S, Capote J, Nicolás C, Orfao A; Spanish Group for the Study of CNS Disease in NHL. Identification of leptomeningeal disease in aggressive B-cell non-Hodgkin's lymphoma: improved sensitivity of flow cytometry. *J Clin Oncol*. 2009;27(9):1462-9.
- Correia RP, Bortolucci ACA, Lopes ACW, Sandes AF, Azambuja AP, Viana MA, et al. Recommendations for quality assurance in multiparametric flow cytometry: first consensus of the Brazilian Group of Flow Cytometry (GBCFLUX). *J. Bras. Patol. Med. Lab.* 2015;51(6):389-396 1
- Kraan J, Gratama JW, Haioun C, Orfao A, Plonquet A, Porwit A, Quijano S, Stetler-Stevenson M, Subira D and Wilson W. Flow Cytometric Immunophenotyping of Cerebrospinal Fluid. *Current Protocols in Cytometry*, 2008);45: 6.25.1-6.25.16.
- Campos A, Trujillo L, López D, Beltrán L, Arias E, Vélez G, Infante A, Reyes I, Vizcaino M, Guzmán P C, Herrera MV, Solano J, Londono D, Cañas A, Pretelt F, Ferrer JC, Cardozo C, Fiorentino S, and Quijano, S. Study of body fluid samples using flow cytometry: Six years of experience at the Hospital Universitario San Ignacio – Pontificia Universidad Javeriana, Bogotá – Colombia. *Universitas Scientiarum* 2017;22:123-143.

## Product Formats

5 mL screw cap tubes containing 0.2 mL of TransFix and EDTA, optimal to stabilise larger samples of CSF.

Product code	Description
TF-CSF-L-2	TransFix CSF 1-4 mL Sample Storage Tube (2 tubes)
TF-CSF-L-10	TransFix CSF 1-4 mL Sample Storage Tube (10 tubes)
TF-CSF-L-50	TransFix CSF 1-4 mL Sample Storage Tube (50 tubes)

2 mL screw cap tubes containing 0.05 mL of TransFix and EDTA, optimal to stabilise smaller samples of CSF.

Product code	Description
TF-CSF-S-2	TransFix CSF 0.25-1 mL Sample Storage Tube (2 tubes)
TF-CSF-S-10	TransFix CSF 0.25-1 mL Sample Storage Tube (10 tubes)
TF-CSF-S-50	TransFix CSF 0.25-1 mL Sample Storage Tube (50 tubes)

Contact your local distributor

