



CYTOMARK

A division of Caltag Medsystems

TransFix®

A Cellular Antigen Stabilisation Reagent

TransFix® is a stabilisation reagent that preserves cellular surface antigens and prevents cellular degradation in a variety of specimen types for flow cytometric analysis.

Blood Collection

TransFix/EDTA Vacuum Blood Collection Tubes (TVT)

3 and 9 mL direct draw collection tubes prefilled with sufficient TransFix and K₃EDTA for the stabilisation and anticoagulation of blood at the point of collection and for up to 14 days.



Cerebrospinal Fluid

TransFix/EDTA CSF Sample Storage Tubes

Sample storage tubes optimised to stabilise CSF for up to 3 days. Two formats available, small (for 0.25 – 1 mL samples) and large (for 1 - 4 mL samples).



Circulating Tumour Cells

Circulating Tumour Cell TransFix/EDTA Vacuum Blood Collection Tubes

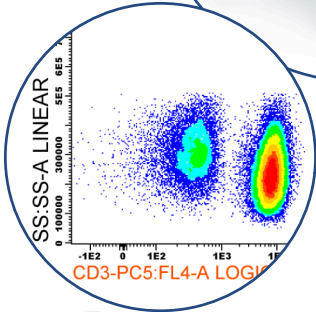
Blood collection tubes prefilled with sufficient TransFix for the collection and stabilisation of circulating tumour cells in a final draw volume of 9 mL.



Sample Storage

TransFix Sample Storage Tubes

Sample storage tubes for stabilising 1 mL of sample. These tubes do not contain an anticoagulant, allowing the stabilisation of blood collected with an anticoagulant other than EDTA.



REGULATORY STATUS

TransFix, TVTs and CSF products are registered IVD devices in the UK, EU and many other territories around the world.

Our 3 mL TVT products are FDA cleared for sale as IVD devices.

Why Stabilise Samples?

Once cells are taken from the body, they undergo apoptosis and enzymatic degradation which diminishes cell numbers and distorts the true immunophenotype of the specimen. Over time, cell sub-populations in aged samples become indistinguishable, rendering the sample unsuitable for flow cytometric analysis. Stabilising your samples with TransFix allows you to maintain the immunophenotype of the cells for longer.

ORDER NOW! Visit: www.cytomark.co.uk/distributors to find your local distributor

Benefits of TransFix®

- **Cost Efficient:**
 - o Achieve greater efficiency in testing by batching samples.
 - o Prevent the need for repeat phlebotomy or lumbar puncture due to degraded samples.
 - o Perform additional tests on the same sample after the initial analysis, without patient recall.
- **Consistent**
 - o Maintain sample integrity during transportation between clinical sites.
 - o Improve pre-analysis variation by preserving all samples at the same time point.
- **Convenient:**
 - o Simply add TransFix and mix by inversion.
 - o Eliminate the need for weekend and evening work.
 - o Mitigate the impact of unexpected machine breakdown or staff shortages.
 - o Transport samples at ambient temperature.

Product Formats

TransFix/EDTA Vacuum Blood Collection Tubes

Product Code	Description
TVT-03-1	TransFix/EDTA Vacuum Blood Collection Tubes (1 x 3 mL tube)
TVT-03-2	TransFix/EDTA Vacuum Blood Collection Tubes (2 x 3 mL tubes)
TVT-03-50	TransFix/EDTA Vacuum Blood Collection Tubes (50 x 3 mL tubes)
TVT-09-1	TransFix/EDTA Vacuum Blood Collection Tubes (1 x 9 mL tube)
TVT-09-2	TransFix/EDTA Vacuum Blood Collection Tubes (2 x 9 mL tubes)
TVT-09-50	TransFix/EDTA Vacuum Blood Collection Tubes (50 x 9 mL tubes)

TransFix/EDTA CSF Sample Storage Tubes

Product Code	Description
TF-CSF-S-2	TransFix/EDTA CSF 0.25-1 mL Sample Storage Tube (2 x 2 mL tubes)
TF-CSF-S-10	TransFix/EDTA CSF 0.25-1 mL Sample Storage Tube (10 x 2 mL tubes)
TF-CSF-S-50	TransFix/EDTA CSF 0.25-1 mL Sample Storage Tube (50 x 2 mL tubes)
TF-CSF-L-2	TransFix/EDTA CSF 1-4 mL Sample Storage Tube (2 x 5 mL tubes)
TF-CSF-L-10	TransFix/EDTA CSF 1-4 mL Sample Storage Tube (10 x 5 mL tubes)
TF-CSF-L-50	TransFix/EDTA CSF 1-4 mL Sample Storage Tube (50 x 5 mL tubes)

Circulating Tumour Cell TransFix/EDTA Vacuum Blood Collection Tubes

Product Code	Description
CTC-TVT-09-2	Circulating Tumour Cell TransFix/EDTA Vacuum Blood Collection Tubes (2 x 9 mL tubes)
CTC-TVT-09-50	Circulating Tumour Cell TransFix/EDTA Vacuum Blood Collection Tubes (50 x 9 mL tubes)

TransFix Sample Storage Tubes

Product Code	Description
TF-01-2	TransFix Sample Storage Tube (2 x 1.2 mL tubes)
TF-01-10	TransFix Sample Storage Tube (10 x 1.2 mL tubes)
TF-01-50	TransFix Sample Storage Tube (50 x 1.2 mL tubes)

TransFix Reagent Bulk

Product Code	Description
TFB-01-1	TransFix Bulk (1 x 1 mL tube)
TFB-01-10	TransFix Bulk (10 x 1 mL tubes)
TFB-01-50	TransFix Bulk (50 x 1 mL tubes)
TFB-20-1	TransFix Bulk (1 x 20 mL tubes)

Contact your local distributor

