

Product Information Sheet

Intended Purpose

CytoLyse is intended for lysing red blood cells in human whole blood samples prior to flow cytometric analysis. CytoLyse is formulated for use with unstabilised and TransFix-treated samples following staining with immunofluorescent antibodies for flow cytometry.

CytoLyse is for Research Use Only.

Summary and Principles

CytoLyse is to be used as part of whole blood sample preparation for flow cytometry. Flow cytometry is a sensitive and specific method for identifying and analysing white blood cells in a flow of single cells analysed by lasers. Red blood cells interfere with this process and are lysed prior to sample acquisition. CytoLyse lyses the red blood cells under gentle hypotonic conditions while preserving the leucocytes for analysis.

Reagents

CytoLyse is a proprietary buffered solution containing <4% diethyleneglycol and <1% formaldehyde. 100ml bottle contains enough solution for 100 tests.

Precautions and Warnings

1. CytoLyse is intended for use as specified in this document. It is a Research Use Only reagent for professional use only.
2. Incubation times or temperatures other than those specified will lead to erroneous results.
3. Do not use CytoLyse after the expiration date on the bottle and packaging.
4. Do not freeze CytoLyse.
5. Do not dilute CytoLyse prior to use.
6. All biological specimens, and materials coming in contact with them, are considered biohazards. Handle as if capable of transmitting infection.
7. CytoLyse contains formaldehyde which is hazardous. May cause an allergic reaction. May cause cancer. Avoid breathing fumes, mist, spray, vapours. Wear protective clothing and gloves. Any contact with skin should be washed off with soap and water immediately.
8. SDS can be obtained at www.cytomark.co.uk or by calling +44(0)1280 827460.

Limitations

CytoLyse does not lyse nucleated red blood cells as efficiently as enucleated red blood cells. In addition, blood samples from patients with certain haematologic disorders in which RBCs are difficult to lyse may show incomplete lysis of RBCs.

CytoLyse was developed using blood samples with EDTA as the anticoagulant. Cytomark has limited information concerning the use of other anticoagulants such as heparin. This product has not been tested on animal blood.

Storage Conditions and Stability

CytoLyse is stable until the expiration date shown on the bottle label when stored as directed. After opening, the reagent is stable for 1 month.

The storage temperature is 18°C–25°C. Do not use this reagent if discolouration occurs or a precipitate forms.

Reagents and materials required but not provided

- Flow cytometer equipped to detect forward scatter and side scatter, correctly aligned and fluorescence compensated
- Fluorochrome-conjugated antibodies to human leucocyte antigens
- Vortex mixer
- Micropipettor with tips

- Other materials might be required. Refer to the appropriate reagent IFU for more information.

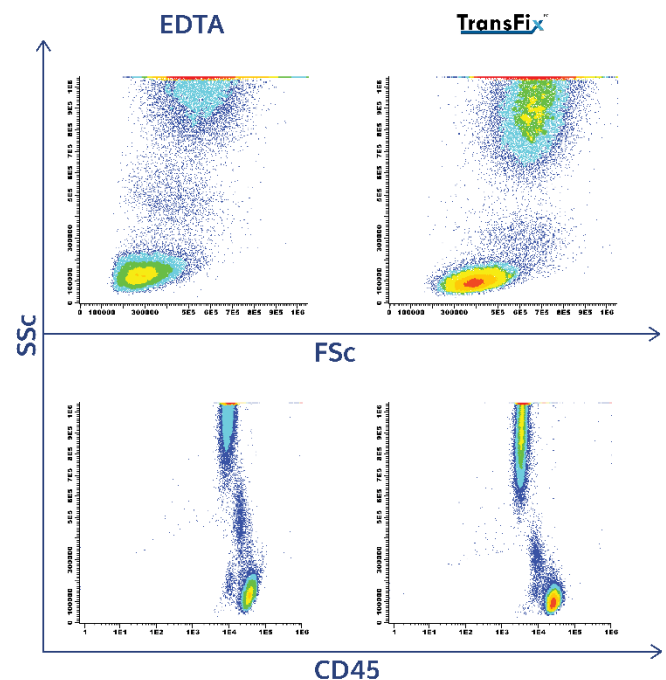
Instructions for Use

1. Stain whole blood with the relevant antibodies according to the product information sheet for the reagent.
2. Add 1 mL of CytoLyse per 100 µL of whole blood and mix by brief vortex.
3. Incubate for 15 minutes at room temperature protected from light.
4. Ensure the sample is clear before use.
5. Follow relevant product information sheet for subsequent flow cytometry analysis.

Disposal

Dispose of with proper precautions in accordance with national and local regulations.

Example graphs (dot plots)



Ordering Information

Please call Cytomark on +44(0)1280 827460 or email support@cytomark.co.uk for assistance. Additional information can be found online at www.cytomark.co.uk.

Product Description	Catalogue Numbers
CytoLyse 100 mL	CYTO-3001

Related Products:

CytoLyse has been optimised for use with TransFix stabilised whole blood samples. TransFix allows for an extended time frame for analytical testing, for batching and shipping of samples and is available in convenient, ready to use sample storage devices as well as simultaneous collection and stabilisation devices.

TransFix can also be purchased in 1 mL & 20 mL vials to allow for flexibility in the volumes of sample to stabilise.

Further information can be found online at www.cytomark.co.uk.

Cytomark, a Division of Caltag Medsystems Ltd.



Caltag Medsystems Ltd, Buckingham, MK18 1TF, UK